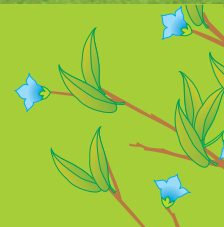




EG's
HARITHA
**Manna
Meadows**
CARITAS

HOME WITH
A SOUL !





Shaping dreams through excellence

CJ's Haritha Homes is an organization of zealous engineers, architects and professionals, rich in experience and highly committed, which has helped the group to sustain excellence for more than 4 decades. This vibrant and dynamic company with expanding interests in commercial, retail and residential real estate has proven to be one of the renowned Property developers in Kottayam. The core strength of the company lies in its dedication to provide quality construction and finish. Since its inception in 1991 it has been following unique value systems that have created an unparalleled name in the real estate arena. CJ's Haritha Homes today, is a strong, multifaceted and multi-disciplinary organization, committed to delighting customers through innovation. CJ's Haritha Homes provides international standards of living in a lush green setting with traditional architecture and modern Engineering.





CJ's
 HARITHA
**Manna
 Meadows**
 CARITAS

Truly life at its best

The company gives topmost priority to location when making decisions regarding real estate. Manna Meadows is unquestionably a home that's worth investing in, it's easy on the pocket, too. You have always fancied a sweet home of your own where you could enjoy the serene solitude, luxurious life and cherished privacy. Right? The new villa project Manna Meadows will offer close access to the city's prominent business areas yet is a perfect escape from the hustle and bustle of the city. Well connected to all parts of the town, CJ's Haritha Manna Meadows are loaded with all the amenities ever thought possible. The residents will have access to shopping complexes, major banks, professional services and state of the art medicare facilities. Tucked away in a serene location near Thellakom, Manna Meadows is just minutes drive from Bus stand, Matha hospital, Carithas hospital, premium schools, places of worship, top-notch restaurants and shops. CJ's Haritha brings this prestigious project to you where everything is within your reach including the price. Imagine the convenience of living in an exclusive community that in fact "has it all." Unbelievable luxury at a location that's truly amazing!



Opulence awaits you in its full splendor

Welcome to your own world of tranquility and happiness! As the name suggests, Manna is a haven of rare privileges. **Manna Meadows** is a well designed housing enclave with 48 superbly designed villas. There's no better place to call home than the lively Manna Meadows - the treasure chest of living. It is the 6th venture of CJ's Haritha Homes designed with world-class standards, featuring amenities that contemporary lifestyle demands. To spice up your life with all the comforts you dream of, Manna Meadows a gated community promises you everything you can think of with the ample mix of facilities, without burning a hole in your pocket at the same time. Each villa is meticulously designed for a feel of grace and grandeur. You can be sure that only the finest materials and highest quality fittings come with your home. Welcome to blissful natural surroundings and ultra luxurious facilities where environment is free from the pollution of urban life. Welcome to Manna Meadows - a home that your feet may leave, but not your hearts!

CJ's
HARITHA
**Manna
Meadows**
CARITAS



Vaastu compliant

Longstanding principles of Vaastu Shastra, which ensure that living environments are in harmony with the physical and metaphysical forces by optimizing the flow of energy, have been strictly followed for designing Manna Meadows.

Live life your way

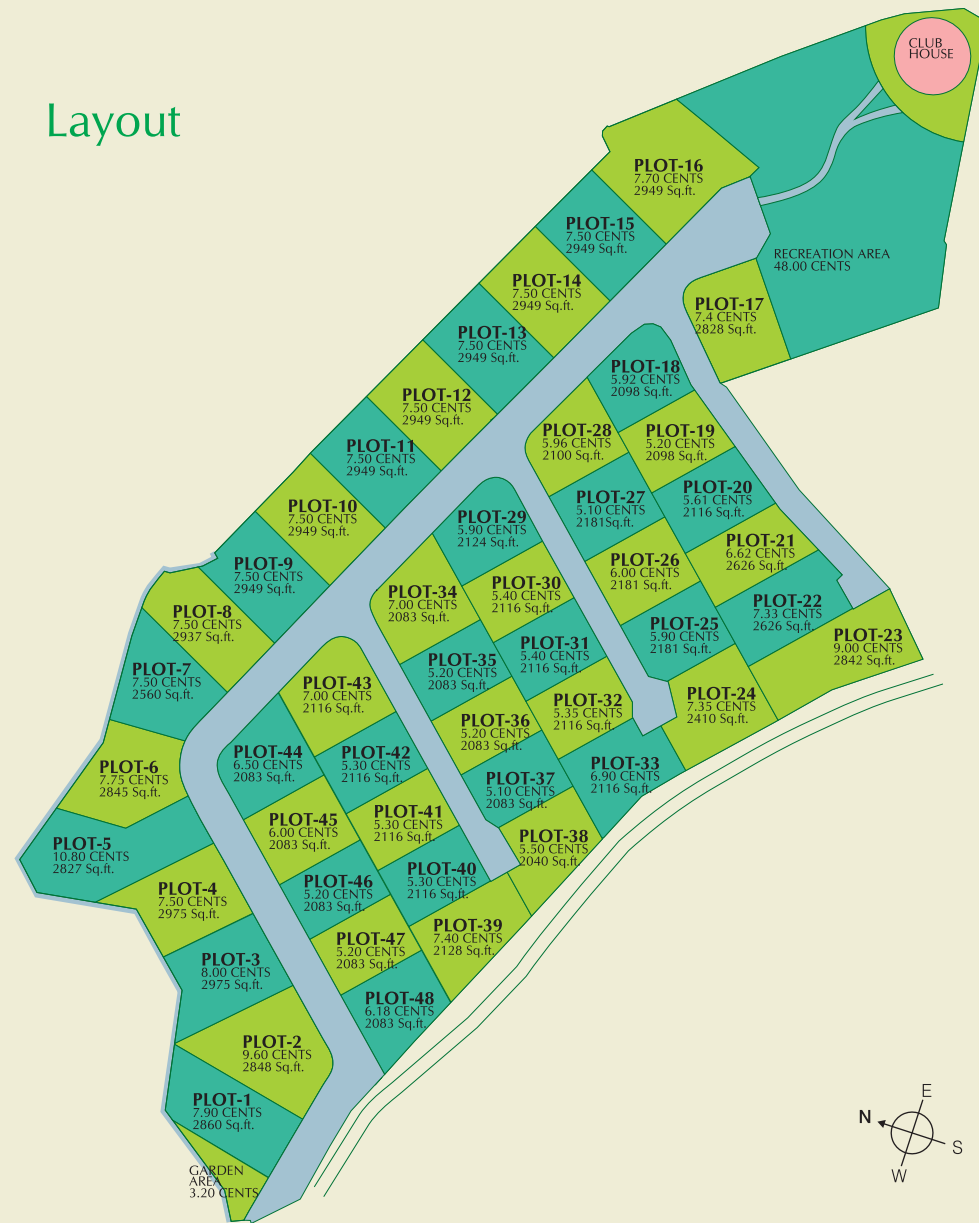
Project Highlights

- Exclusive gated Community
- Adequate street lights
- Pollution Free Atmosphere
- Swimming pool
- 24 hr gymnasium
- Club house
- Tennis court
- Jogging track
- Children's Play area
- Exquisite landscaped garden with pleasant sit-outs
- Power Back up for common amenities
- Water connection will be provided as per plan up to the plot
- Round the clock security
- Stylish external lighting
- Loan facility
- Driver resting places

Club House



Layout



Common Facilities & Specifications

Structure

- Earthquake resistant structure
- R.R. foundation and basement
- Anti termite treatment
- Wire-cut bricks for super structure
- R.C.C. slab for ground floor and first floor
- Plastered surfaces ► Clay tiles

Joinery

- Front door shutter fully teak wood
- Other doors and windows with imported violet / padok / ready made wood
- Window shutter combination of wood and glass with stainless steel fittings

Finishing

- Inside walls putty and emulsion paint
- Exterior walls exterior & emulsion paint
- Flooring vitrified tiles

Toilet

- Luxury sanitary fittings white colour
- C.P. fittings Cera, Crabtree, Mark or equivalent
- Separate dry and wet area
- Superior quality wash basin in all bathrooms
- Ceramic wall & floor tiles

Kitchen

- Granite counter top

Electrification

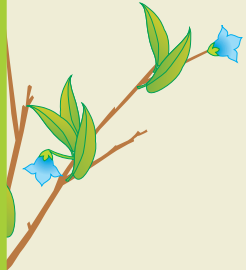
- Wiring-Finolex / Havells
- Switches-MK, Crabtree, ABB or equivalent
- Provisions exhaust fan in all bathrooms & kitchen
- Three phase electricity supply for all houses, distribution box (DB), Miniature Circuit breakers (MCB) with earth leakage Circuit Breakers (ELCB)
- Inverter provision

Water Supply

- Common well ► Individual septic tank

Modifications

Alterations or additional works may be executed if specified during on before stage wise progress of work, whichever is earliest. Amenities provided at extra cost are fans, light fittings, furniture, wardrobes, kitchen cabinets, home appliances etc.



FLOOR PLAN
TYPE
01



Ground Floor
1745.59 Sq.ft.

Plot No. 01



First Floor
1114.74 Sq.ft.

Total Area
2860.33 Sq.ft.



Ground Floor
1841.90 Sq.ft.

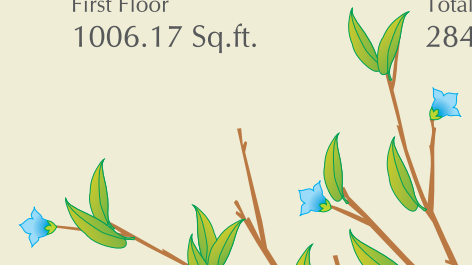


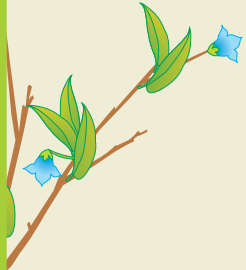
First Floor
1006.17 Sq.ft.

Total Area
2848.06 Sq.ft.

FLOOR PLAN
TYPE
02

Plot No. 02





FLOOR PLAN
TYPE
03



Ground Floor
1872.88 Sq.ft.

Plot No. 03 & 04



First Floor
1101.93 Sq.ft.

Total Area
2974.81 Sq.ft.



Ground Floor
1765.29 Sq.ft.

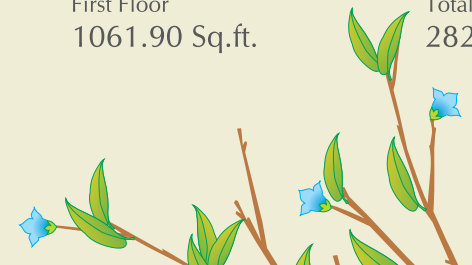


First Floor
1061.90 Sq.ft.

Total Area
2827.19 Sq.ft.

FLOOR PLAN
TYPE
04

Plot No. 05





Ground Floor
1784.86 Sq.ft.



First Floor
1059.64 Sq.ft.
Total Area
2844.51 Sq.ft.



Ground Floor
1642.73 Sq.ft.



First Floor
917.29 Sq.ft.
Total Area
2560.02 Sq.ft.

FLOOR PLAN
TYPE
05

Plot No. 06

FLOOR PLAN
TYPE
06

Plot No. 07

FLOOR PLAN TYPE 07

Plot No. 08



Ground Floor
1844.80 Sq.ft.



First Floor
1092.03 Sq.ft.
Total Area
2936.83 Sq.ft.

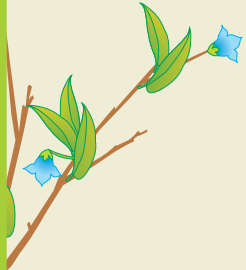


Ground Floor
1917.32 Sq.ft.



First Floor
1031.34 Sq.ft.
Total Area
2948.66 Sq.ft.

Plot No. 09, 10, 11, 12, 13, 14, 15 & 16



FLOOR PLAN
TYPE
09



Ground Floor
1738.28 Sq.ft.



First Floor
1090.00 Sq.ft.

Total Area
2828.26 Sq.ft.



Ground Floor
1263.33 Sq.ft.



First Floor
834.65 Sq.ft.

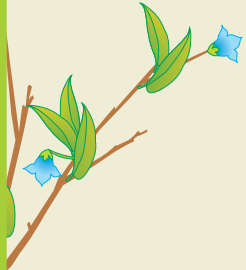
Total Area
2097.98 Sq.ft.



FLOOR PLAN
TYPE
10

Plot No. 18 & 19





Ground Floor
1270.76 Sq.ft.



First Floor
845.63 Sq.ft.
Total Area
2116.38 Sq.ft.



Ground Floor
1634.98 Sq.ft.



First Floor
991.32 Sq.ft.
Total Area
2626.30 Sq.ft.



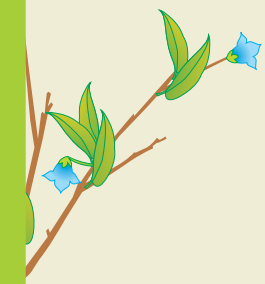
FLOOR PLAN TYPE 11

Plot No. 20, 30, 31, 32, 40, 41, 42 & 43

FLOOR PLAN TYPE 12

Plot No. 21 & 22





FLOOR PLAN
TYPE
13

Plot No. 23



Ground Floor
1732.36 Sq.ft.



First Floor
1109.14 Sq.ft.
Total Area
2841.50 Sq.ft.



Ground Floor
1470.03 Sq.ft.



First Floor
940.31 Sq.ft.
Total Area
2410.34 Sq.ft.

FLOOR PLAN
TYPE
14

Plot No. 24





FLOOR PLAN
TYPE
15

Ground Floor
1312.83Sq.ft.

Plot No. 25, 26 & 27



First Floor
867.80 Sq.ft.

Total Area
2180.63 Sq.ft.



Ground Floor
1257.09 Sq.ft.



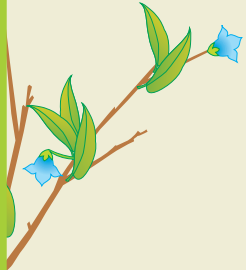
First Floor
842.61Sq.ft.

Total Area
2099.70 Sq.ft.

Plot No. 28

FLOOR PLAN
TYPE
16





Ground Floor
1244.60 Sq.ft.

Plot No. 29



First Floor
879.09 Sq.ft.
Total Area
2123.70 Sq.ft.



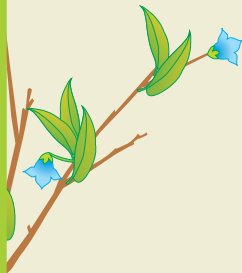
Ground Floor
1270.76 Sq.ft.



First Floor
845.63Sq.ft.
Total Area
2116.38 Sq.ft.

Plot No. 33





Ground Floor
1250.42 Sq.ft.



First Floor
832.39 Sq.ft.

Total Area
2082.81 Sq.ft.



Ground Floor
1197.37 Sq.ft.



First Floor
842.18Sq.ft.

Total Area
2039.55 Sq.ft.



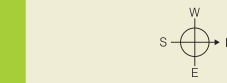
FLOOR PLAN
TYPE
19

Plot No. 34, 35, 36, 37, 44, 45, 46, 47 & 48

FLOOR PLAN
TYPE
20

Plot No. 38





FLOOR PLAN
TYPE
21

Plot No. 39

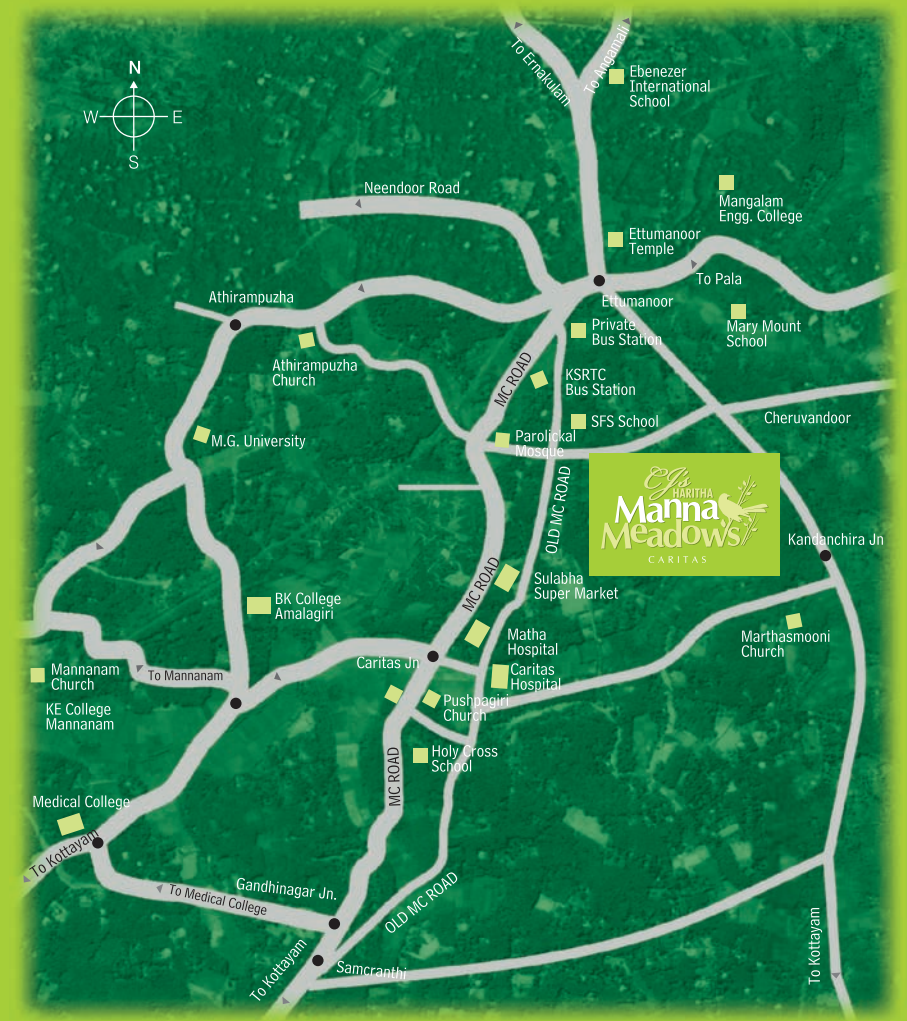


Ground Floor
1269.03 Sq.ft.



First Floor
859.40 Sq.ft.

Total Area
2128.44 Sq.ft.



Location

Near Caritas Junction, 2 km from MC road. Kottayam is 7 km away with major railway station and bus stations. Ettumanoor is 2 km near, facilitating banking with branches of major banks. Medical college, University and other renowned educational institutions are within 5 km radius. Major Hospitals, Matha and Caritas within 2 km reach. Distance to Kochi International Airport 80 km. Famous religious and worship places are located within 2 km distance. Half an hour drive can get you to Kumarakom, the world famous tourist spot.

Value for the investment

Fast developing area and hence high appreciation for your investments. Very close proximity to Educational Institutions, Major Hospitals, worship centres etc. increases the value of the property at Caritas Junction near Ettumanoor.





I Floor,
Green Field Plaza,
Thellakom P.O.,
Kottayam- 686 016
Kerala, South India

Phone : +91 481 3209122, 3209132
Mobile: +91 95 26 26 22 22, 95 26 27 22 22
Email: sales@cjsharitha.com
office@cjsharitha.com
www.cjsharitha.com

► Alterations which affect the stability & exterior appearance of the structure are not allowed for executions
► All measurements and specifications given in this brochure are subject to minor variations without specific or general notice ► This brochure does not constitute a legal offer.